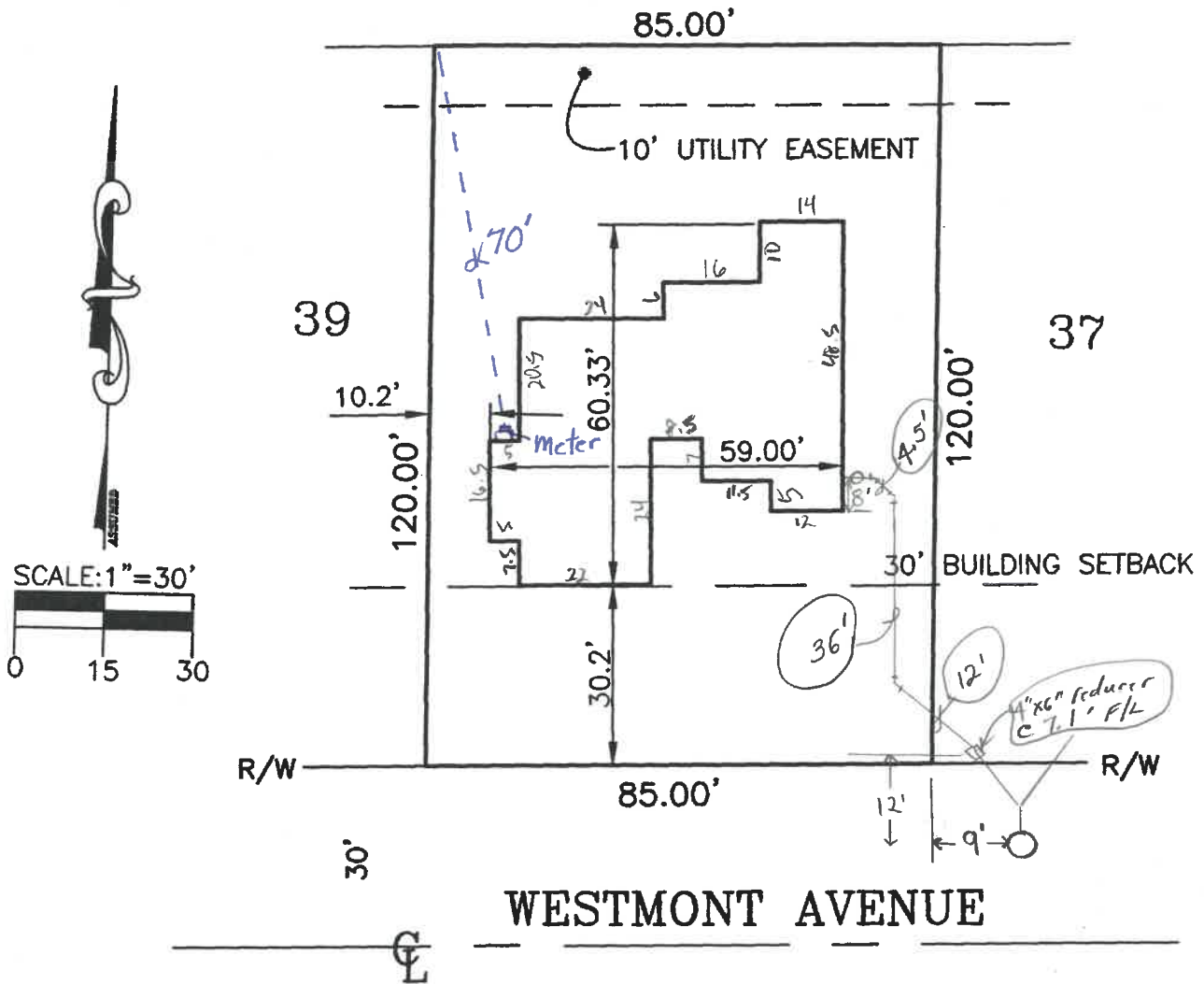


# PLOT PLAN

## LOT 38 OF GERKEN-HOEFFEL THIRD ADDITION CITY OF NAPOLEON, HENRY COUNTY, OHIO

PREPARED FOR GARY DODDS

1126 Westmont



**Feller  
Finch & Associates, Inc.**  
1883 Woodlands Drive P.O. Box 68 Maumee, Ohio 43537-0068  
Engineers • Surveyors

DATE: 4-21-97

Phone: (419)893-3680  
Fax: (419)893-2982  
PROJECT NO.: 97-2179

To 6" Above Pipe Along Back R  
 Typical Both Sides

(38)

STORM 44 1/2  
 10'6" FROM BACK LINE  
 APPROX 4'

(37)

1126

1116

MH #78  
 42+02.20 Rt.  
 42+01.5

FL. 673.60 9% 5' F/L

86.0'

62.0'

3" San.  
 6" U.D.

(6)

(5)

42+00

6" U.D.

86.0'

62.0'

FL. 673.70

1125

1115

- ① 8"x6" Tee, 10'-6" ADS, & 6" Plug
- ② 8"x6" Wye, 53'-6" San., & 6" Plug
- ③ 8x6 Wye, 11'-6" San., & 6x6 Double Wye & 2-6" Plugs
- ④ 8x6 Wye, 50'-6" San., & 6"x6" Double Wye, 2-6" Plug
- ⑤ 50'-6" San., 6x6 Double Wye, 2-6" Plugs
- ⑥ 10'-6" San., 6x6 Double Wye, 2-6" Plugs

(33)

(34)

①

42+46  
 Sta. ~~42+45~~  
 Fl. 676.92

41+60  
 Sta. ~~41+58~~  
 Fl. 676.58

①

41.5'

BM  
 Bc  
 We

+75	+50	+25	+00	+75	+50	+40
680.54	680.44	680.34	680.24	680.14	680.04	680.00

NOTE: